



MODEL NO: SV1A

PART NO: 8133809

SV1A SAFETY VISOR

INTRODUCTION

Thank you for purchasing this CLARKE Safety Visor. Before attempting to use this product, please read this manual thoroughly and follow the instructions carefully.

This product is designed for face and eye protection against high-speed particles of low energy impact. The visor is designed to be lightweight and comfortable to wear but is not unbreakable.

The visor will not provide protection against fine dust, gas, ultra violet or infra red radiation, ionising radiation, liquids under pressure or other severe hazards.

SAFETY PRECAUTIONS

- Inspect the visor frequently, as a pitted or scratched visor reduces vision, reduces protection and therefore should be replaced immediately.
- Additional eye protection such as impact resistant safety spectacles or goggles should be worn when using this visor for more hazardous work.
- This visor is not suitable for welding, laser cutting or grinding.
- The protective visor is breakable and will not protect against severe impact hazards.
- Use this visor for face and eye protection against sparks and splashing of chemicals.
- Never place this product on a hot surface.
- When necessary, use identical replacement parts to ensure the safety of the product is maintained.
- Do not use if any part of the product is cracked or broken.

CARE AND MAINTENANCE

Damaged components must be replaced immediately to avoid risk of eye and face injuries. A cracked, pitted or scratched visor will reduce vision and seriously reduce the level of protection and it should be replaced.

The visor can be wiped with soapy water or a household glass cleaner when dirty. Apply the cleaner with a clean cloth or paper towel. Do not use solvents. Never use tools or other sharp objects to remove foreign material from the visor.

Store the safety visor at room temperature out of direct sunlight.

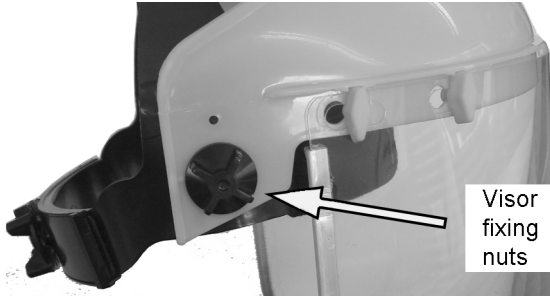
GUARANTEE

This product is guaranteed against faulty manufacture for a period of 12 months from the date of purchase. Please keep your receipt which will be required as proof of purchase.

This guarantee is invalid if the product is found to have been abused or tampered with in any way, or not used for the purpose for which it was intended.

Faulty goods should be returned to their place of purchase, no product can be returned to us without prior permission. This guarantee does not effect your statutory rights.

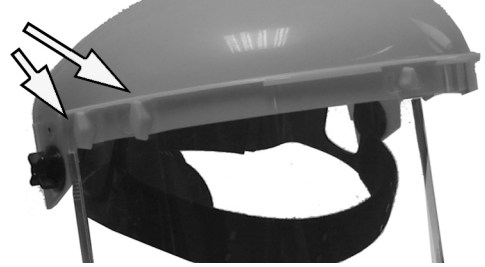
PREPARATION FOR USE



Visor fixing nuts

1. Remove all protective film from the transparent visor before use and remove the visor fixing nuts.

Swivel Tabs



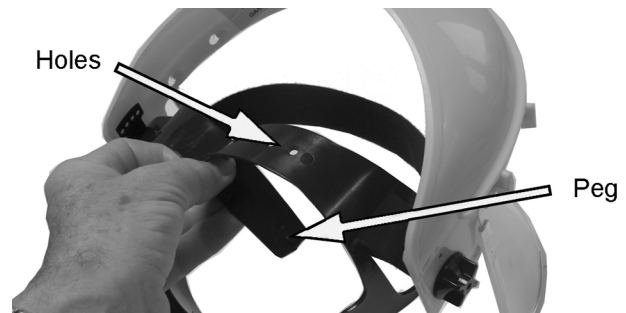
2. Engage the visor with the swivel tab at the front. Slide the visor slots onto the four swivel tabs and turn to secure the visor. Replace visor fixing nuts.



Adjustment knob

3. The headband should be adjusted both in diameter to fit the wearer's head. To do this, turn the adjustment knob either left or right to expand or contract the headband.

Holes



Peg

4. The top headband can be adjusted by bending the strap and positioning the peg in the appropriate hole to suit the user.

DECLARATION OF CONFORMITY AND PARTS IDENTIFICATION



Clarke
INTERNATIONAL
Hornhill Street, Epping, Essex CM16 4LG

DECLARATION OF CONFORMITY

This is an important document and should be retained.

Product Description: Safety Visor
Model number(s): SV1A
Serial / batch Number: N/A
Date of Issue: 23/07/2020
Certificate Number: CE-PC-200331-159-01-9A
Notified Body: NB 2834
 CCQS Certification Services Limited
 Block 1 Blanchardstown Corporate Park
 Ballycoolin Road, Blanchardstown
 Dublin 15, D15 AKK1, Ireland

We hereby declare that this product(s) complies with the following directive(s):
 (EU) 2016/425 Personal Protective Equipment Regulation.

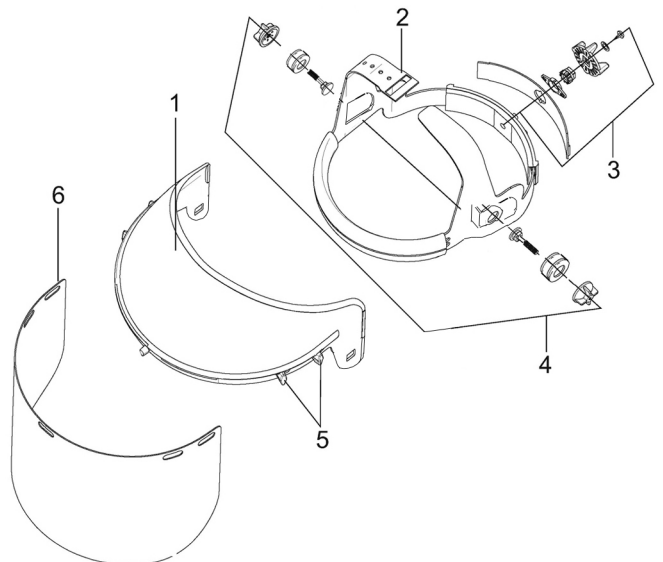
The following standards have been applied to the product(s):
 EN 166:2001.

The technical documentation required to demonstrate that the product(s) meet(s) the requirement(s) of the aforementioned directive(s) has been compiled and is available for inspection by the relevant enforcement authorities.

The CE mark was first applied in: 2015

Signed:


 J.A. Clarke
 Director



1. Frame shell
2. Height adjustment
3. Tightness adjustment
4. Angle adjustment
5. Visor fixing posts
6. Visor